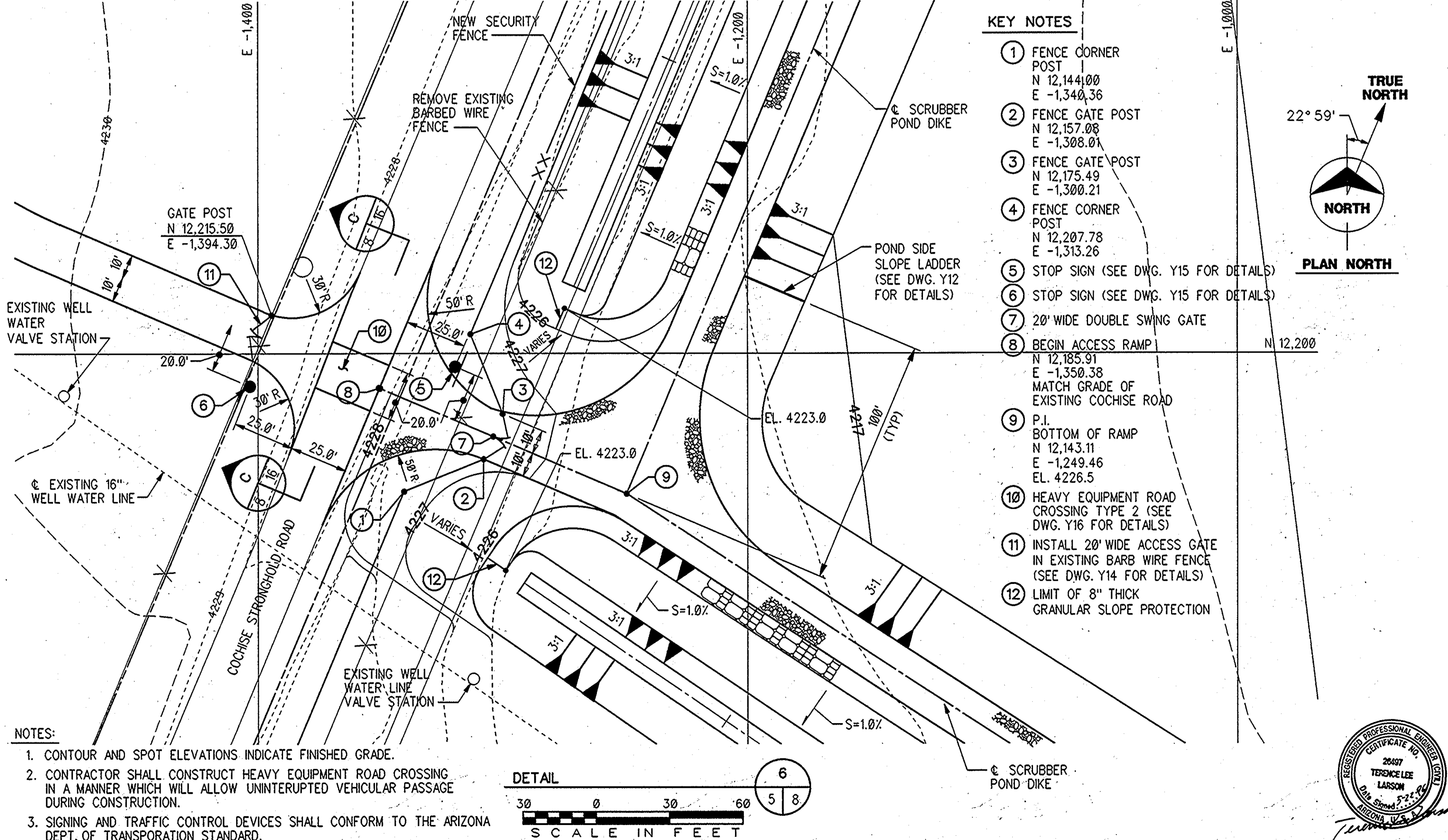
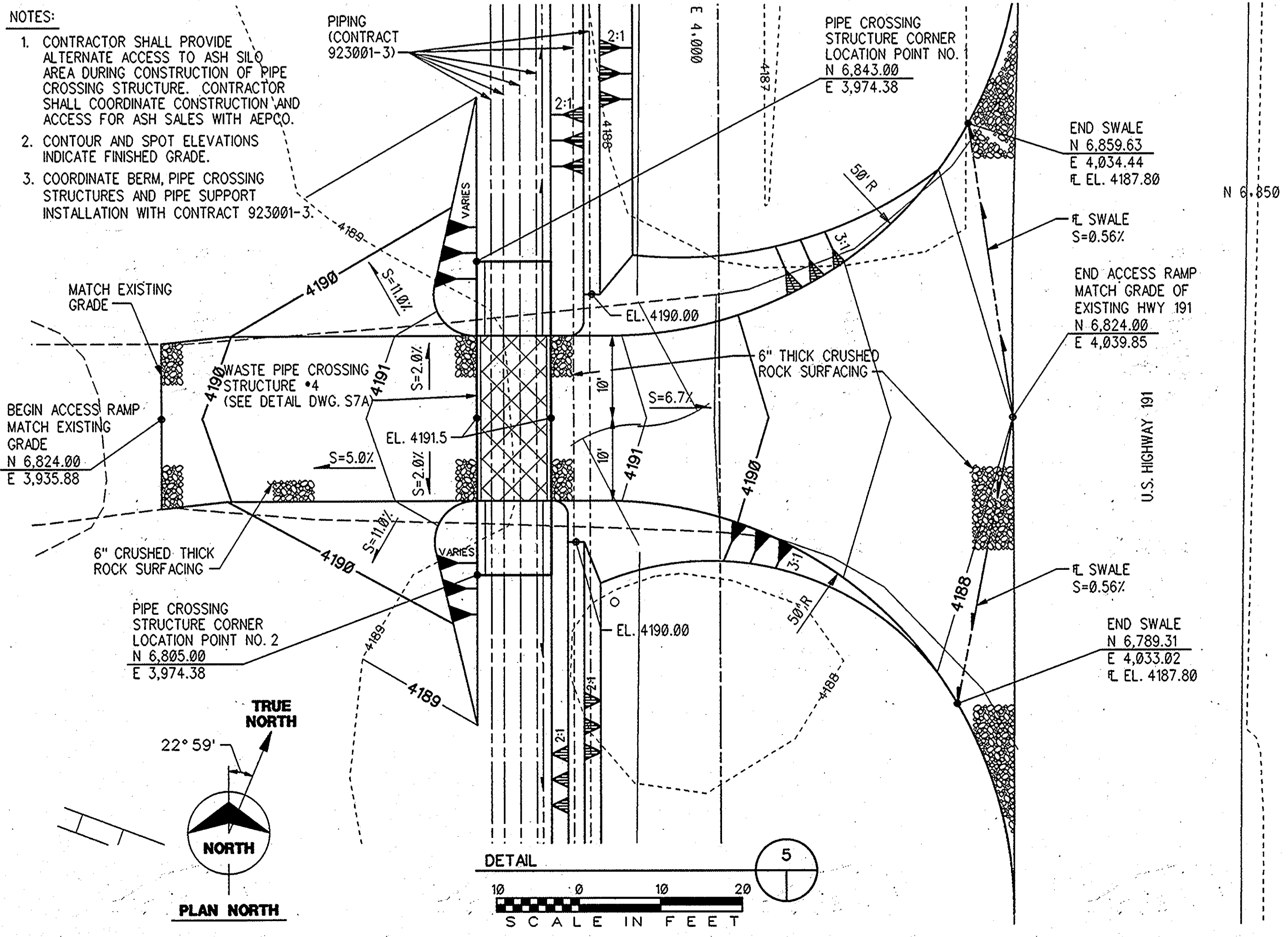


- NOTES:**
- CONTRACTOR SHALL PROVIDE ALTERNATE ACCESS TO ASH SILO AREA DURING CONSTRUCTION OF PIPE CROSSING STRUCTURE. CONTRACTOR SHALL COORDINATE CONSTRUCTION AND ACCESS FOR ASH SALES WITH AEPCC.
  - CONTOUR AND SPOT ELEVATIONS INDICATE FINISHED GRADE.
  - COORDINATE BERM, PIPE CROSSING STRUCTURES AND PIPE SUPPORT INSTALLATION WITH CONTRACT 923001-3.



- KEY NOTES:**
- FENCE CORNER POST  
N 12,144.00  
E -1,340.36
  - FENCE GATE POST  
N 12,157.08  
E -1,308.01
  - FENCE GATE POST  
N 12,175.49  
E -1,300.21
  - FENCE CORNER POST  
N 12,207.78  
E -1,313.26
  - STOP SIGN (SEE DWG. Y15 FOR DETAILS)
  - STOP SIGN (SEE DWG. Y15 FOR DETAILS)
  - 20' WIDE DOUBLE SWING GATE
  - BEGIN ACCESS RAMP  
N 12,185.91  
E -1,350.38  
MATCH GRADE OF EXISTING COCHISE ROAD
  - P.I. BOTTOM OF RAMP  
N 12,143.11  
E -1,249.46  
EL. 4226.5
  - HEAVY EQUIPMENT ROAD CROSSING TYPE 2 (SEE DWG. Y16 FOR DETAILS)
  - INSTALL 20' WIDE ACCESS GATE IN EXISTING BARB WIRE FENCE (SEE DWG. Y14 FOR DETAILS)
  - LIMIT OF 8" THICK GRANULAR SLOPE PROTECTION

- NOTES:**
- CONTOUR AND SPOT ELEVATIONS INDICATE FINISHED GRADE.
  - CONTRACTOR SHALL CONSTRUCT HEAVY EQUIPMENT ROAD CROSSING IN A MANNER WHICH WILL ALLOW UNINTERRUPTED VEHICULAR PASSAGE DURING CONSTRUCTION.
  - SIGNING AND TRAFFIC CONTROL DEVICES SHALL CONFORM TO THE ARIZONA DEPT. OF TRANSPORTATION STANDARD.

no.	date	by	revision
0	3-10-94	TLL	ISSUED TO OWNER FOR BID
	9-20-94	TLL	ISSUED AS BID
	4-8-96	DLM	CONFORMING TO CONSTRUCTION RECORDS

**Burns & McDonnell**

date JULY 29, 1992 detailed D. MADDOCK  
designed M. FRERKING checked T. LARSON

**AEPCO**  
**ARIZONA ELECTRIC POWER COOPERATIVE, INC.**  
**APACHE STATION**  
COMBUSTION WASTE DISPOSAL FACILITY  
WASTE DISPOSAL PONDS AND APPURTENANCES CONSTRUCTION  
WASTE PIPING CORRIDOR GRADING PLAN AREA 6

project 91-033-1-010 contract 923001-2  
drawing Y8 - 0 rev.  
sheet of sheets

NEW ARIZONA ELECTRIC POWER COOPERATIVE, INC. APACHE STATION 2800 TROCKLE LARSON  
APR 22 1992

Project: E-512200-06-3814-Y020  
Sheet: #10