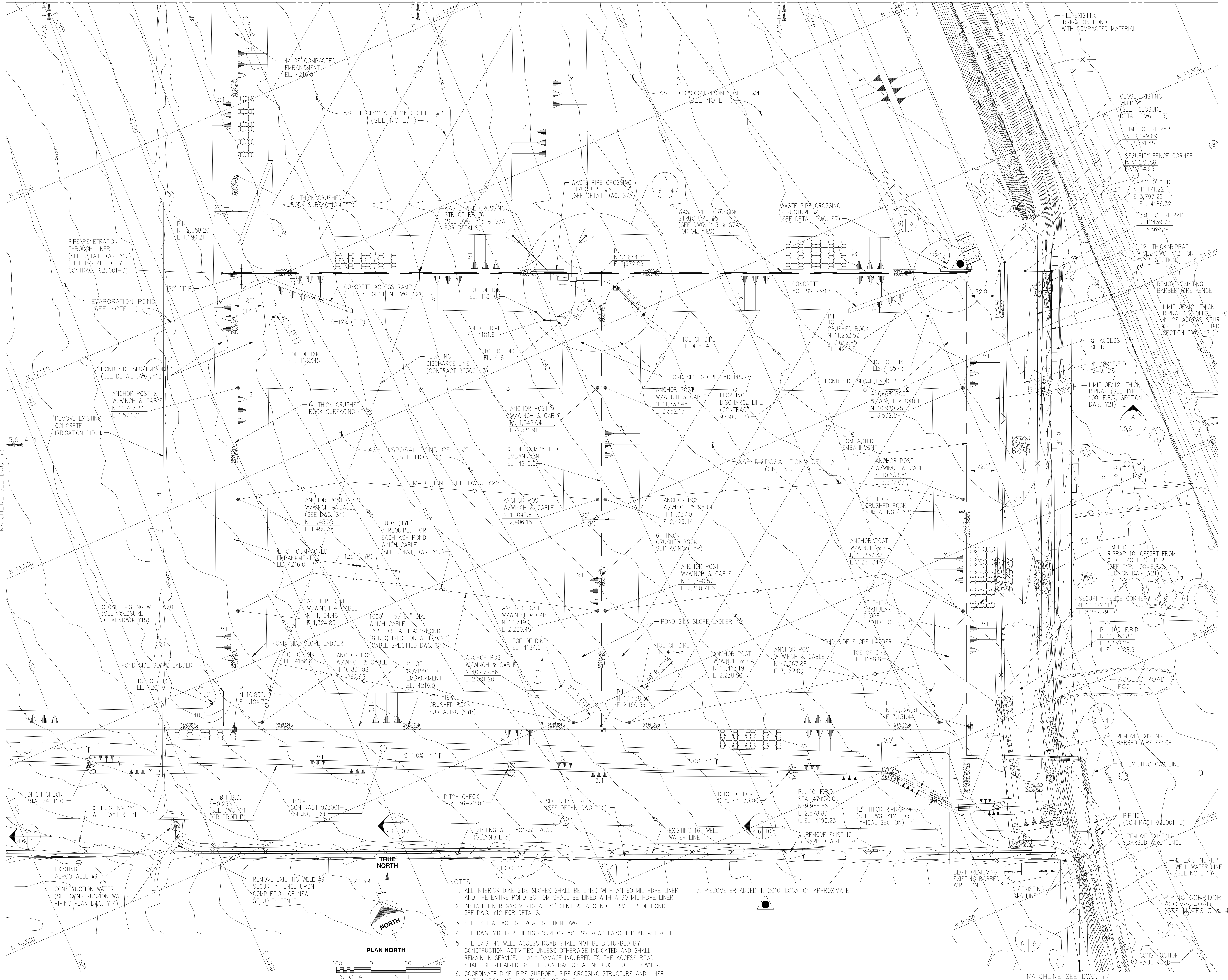


no.	date	by	revision
0	3-10-94	TLL	ISSUED TO OWNER FOR BID
1	4-8-96	DLM	ISSUED AS BID
CONFORMING TO CONSTRUCTION RECORDS			
B	1/24/97	CRM	DCN 96/104, C. Reece / C. Walling
C	1/19/12	JLC	DCN 11/01, C. REECE



- NOTES:
1. ALL INTERIOR DIKE SIDE SLOPES SHALL BE LINED WITH AN 80 MIL HDPE LINER, AND THE ENTIRE POND BOTTOM SHALL BE LINED WITH A 60 MIL HDPE LINER.
 2. INSTALL LINER GAS VENTS AT 50' CENTERS AROUND PERIMETER OF POND. SEE DWG. Y12 FOR DETAILS.
 3. SEE TYPICAL ACCESS ROAD SECTION DWG. Y15.
 4. SEE DWG. Y16 FOR PIPING CORRIDOR ACCESS ROAD LAYOUT PLAN & PROFILE.
 5. THE EXISTING WELL ACCESS ROAD SHALL NOT BE DISTURBED BY CONSTRUCTION ACTIVITIES UNLESS OTHERWISE INDICATED AND SHALL REMAIN IN SERVICE. ANY DAMAGE INCURRED TO THE ACCESS ROAD SHALL BE REPAIRED BY THE CONTRACTOR AT NO COST TO THE OWNER.
 6. COORDINATE DIKE, PIPE SUPPORT, PIPE CROSSING STRUCTURE AND LINER INSTALLATION WITH CONTRACT 923001-3.
 7. PIEZOMETER ADDED IN 2010. LOCATION APPROXIMATE

no.	date	by	revision
0	3-10-94	TLL	ISSUED TO OWNER FOR BID
1	4-8-96	DLM	ISSUED AS BID
CONFORMING TO CONSTRUCTION RECORDS			
B	1/24/97	CRM	DCN 96/104, C. Reece / C. Walling
C	1/19/12	JLC	DCN 11/01, C. REECE



date	JULY 29, 1992	detailed	D. MADDOCK
designed	M. FRERKING	checked	T. LARSON

AEPCO
ARIZONA ELECTRIC
POWER COOPERATIVE, INC.
APACHE STATION

COMBUSTION WASTE DISPOSAL FACILITY
 WASTE DISPOSAL PONDS AND APPURTENANCES CONSTRUCTION
 WASTE POND GRADING PLAN AREA 4

project	91-033-1-010	contract	923001-2
drawing	Y6	rev.	1

sheet of sheets

COPYRIGHT © 1994 BY BURNS & MCDONNELL ENGINEERING COMPANY, INC.