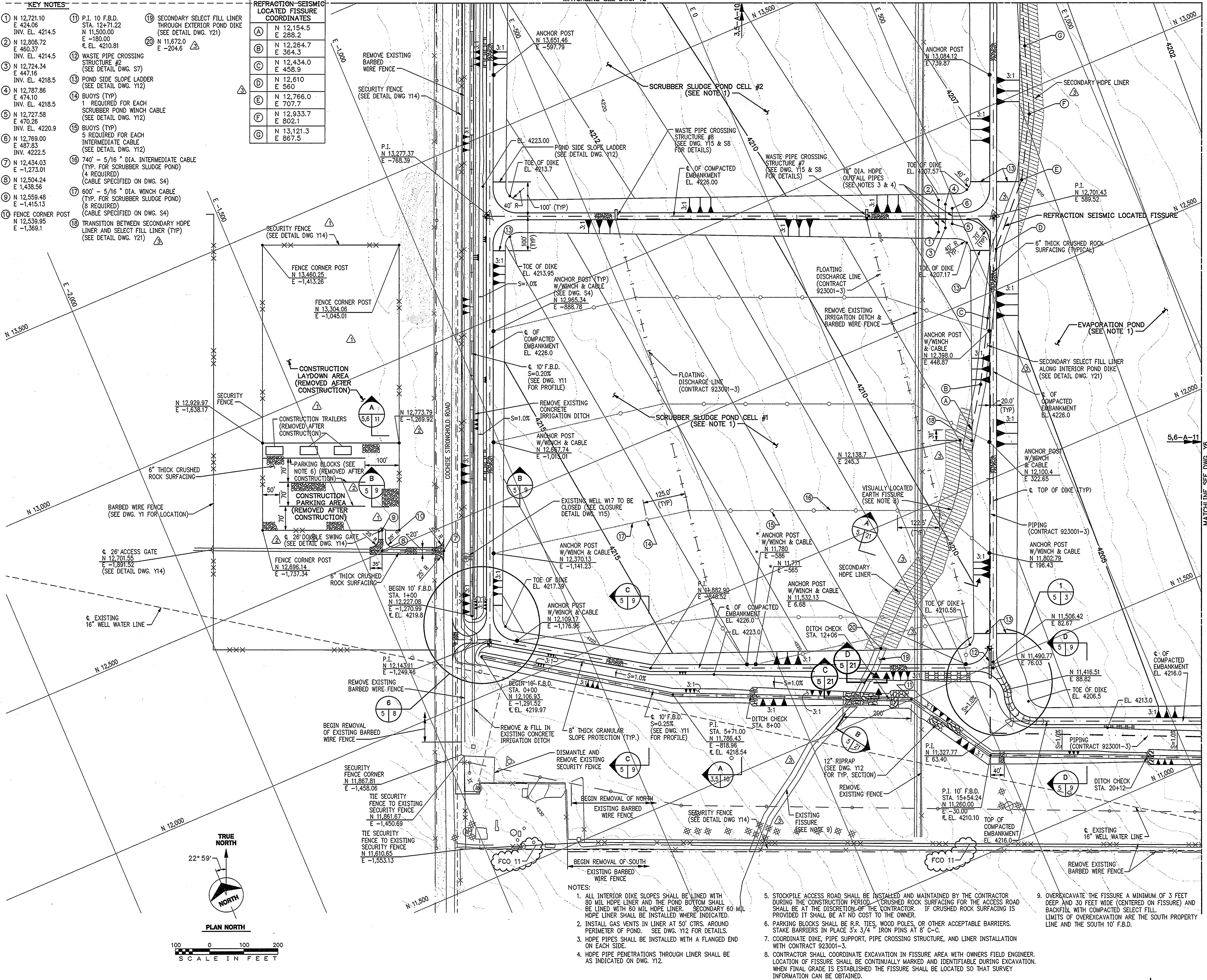


no.	date	by	revision
0	3-10-94	TLL	ISSUED TO OWNER FOR BID
1	9-13-94	DLM	REVISED AS PER ADDENDUM NO. 1
2	9-14-94	DLM	CLARIFIED COORDINATE & PARKING BLOCK LOCATION
3	9-20-94	TLL	ISSUED AS BID
3	11-15-94	DLM	REVISED SECONDARY LINER PLAN FOR EARTH FISSURE AND ADDED SURVEY MONUMENTS
	11-18-94	TLL	ISSUED PER C.O. #2
	1-27-95	TLL	REVISION TO C.O. #2
4	4-8-96	DLM	CONFORMING TO CONSTRUCTION RECORDS
E	2/20/98	CRM	DCN 98/19, C. Reece /CW

- KEY NOTES**
- N 12,721.10
E 424.06
INV. EL. 4214.5
 - N 12,806.72
E 460.37
INV. EL. 4214.5
 - N 12,724.34
E 447.16
INV. EL. 4218.5
 - N 12,787.86
E 474.10
INV. EL. 4218.5
 - N 12,727.58
E 470.26
INV. EL. 4220.9
 - N 12,769.00
E 487.83
INV. EL. 4222.5
 - N 12,434.03
E -1,273.01
 - N 12,504.24
E 1,438.56
 - N 12,550.48
E -1,415.13
 - FENCE CORNER POST
N 12,539.95
E -1,369.1
 - P.I. 10' F.B.D.
STA. 12+71.22
N 11,500.00
E -180.00
E. EL. 4210.81
 - WASTE PIPE CROSSING STRUCTURE #2
(SEE DETAIL DWG. S7)
 - POND SIDE SLOPE LADDER
(SEE DETAIL DWG. Y12)
 - BUOYS (TYP)
1 REQUIRED FOR EACH SCRUBBER POND WINCH CABLE
(SEE DETAIL DWG. Y12)
 - BUOYS (TYP)
5 REQUIRED FOR EACH INTERMEDIATE CABLE
(SEE DETAIL DWG. Y12)
 - 74" - 5/16" DIA. INTERMEDIATE CABLE
(TYP. FOR SCRUBBER SLUDGE POND)
(4 REQUIRED)
(CABLE SPECIFIED ON DWG. S4)
 - 600" - 5/16" DIA. WINCH CABLE
(TYP. FOR SCRUBBER SLUDGE POND)
(8 REQUIRED)
(CABLE SPECIFIED ON DWG. S4)
 - TRANSITION BETWEEN SECONDARY HDPE LINER AND SELECT FILL LINER (TYP)
(SEE DETAIL DWG. Y21)
 - SECONDARY SELECT FILL LINER THROUGH EXTERIOR POND DIKE
(SEE DETAIL DWG. Y21)
 - 11,672.0
E -204.6

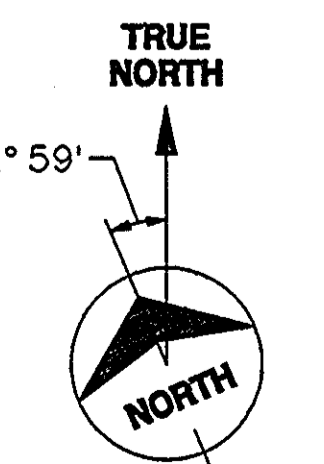
REFRACTION SEISMIC LOCATED FISSURE COORDINATES

Point	N	E
A	12,154.5	288.2
B	12,264.7	364.3
C	12,434.0	458.9
D	12,610	560
E	12,766.0	707.7
F	12,933.7	802.1
G	13,121.3	867.5



NOTES:

- ALL INTERIOR DIKE SLOPES SHALL BE LINED WITH 80 MIL HDPE LINER AND THE POND BOTTOM SHALL BE LINED WITH 60 MIL HDPE LINER. SECONDARY 60 MIL HDPE LINER SHALL BE INSTALLED WHERE INDICATED.
- INSTALL GAS VENTS IN LINER AT 50' CTRS. AROUND PERIMETER OF POND. SEE DWG. Y12 FOR DETAILS.
- HDPE PIPES SHALL BE INSTALLED WITH A FLANGED END ON EACH SIDE.
- HDPE PIPE PENETRATIONS THROUGH LINER SHALL BE AS INDICATED ON DWG. Y12.
- STOCKPILE ACCESS ROAD SHALL BE INSTALLED AND MAINTAINED BY THE CONTRACTOR DURING THE CONSTRUCTION PERIOD. CRUSHED ROCK SURFACING FOR THE ACCESS ROAD SHALL BE AT THE DISCRETION OF THE CONTRACTOR. IF CRUSHED ROCK SURFACING IS PROVIDED IT SHALL BE AT NO COST TO THE OWNER.
- PARKING BLOCKS SHALL BE R.R. TIES, WOOD POLES, OR OTHER ACCEPTABLE BARRIERS. STAKE BARRIERS IN PLACE 3x3/4" IRON PINS AT 8' C-C.
- COORDINATE DIKE, PIPE SUPPORT, PIPE CROSSING STRUCTURE, AND LINER INSTALLATION WITH CONTRACT 923001-3.
- CONTRACTOR SHALL COORDINATE EXCAVATION IN FISSURE AREA WITH OWNERS FIELD ENGINEER. LOCATION OF FISSURE SHALL BE CONTINUALLY MARKED AND IDENTIFIED DURING EXCAVATION. WHEN FINAL GRADE IS ESTABLISHED THE FISSURE SHALL BE LOCATED SO THAT SURVEY INFORMATION CAN BE OBTAINED.
- OVEREXCAVATE THE FISSURE A MINIMUM OF 3 FEET DEEP AND 30 FEET WIDE (CENTERED ON FISSURE) AND BACKFILL WITH COMPACTED SELECT FILL. LIMITS OF OVEREXCAVATION ARE THE SOUTH PROPERTY LINE AND THE SOUTH 10' F.B.D.



COPYRIGHT © 1994 BY BURNS & MCDONNELL ENGINEERING COMPANY, INC.

Burns & McDonnell

date	JULY 29, 1992	detailed	D. MADDOCK
designed	M. FRERKING	checked	T. LARSON

AEP CO
ARIZONA ELECTRIC POWER COOPERATIVE, INC.
APACHE STATION
COMBUSTION WASTE DISPOSAL FACILITY
WASTE DISPOSAL PONDS AND APPURTENANCES CONSTRUCTION
WASTE POND GRADING PLAN AREA 3

project	91-033-1-010	contract	923001-2
drawing	Y5	rev.	4
sheet		of	sheets