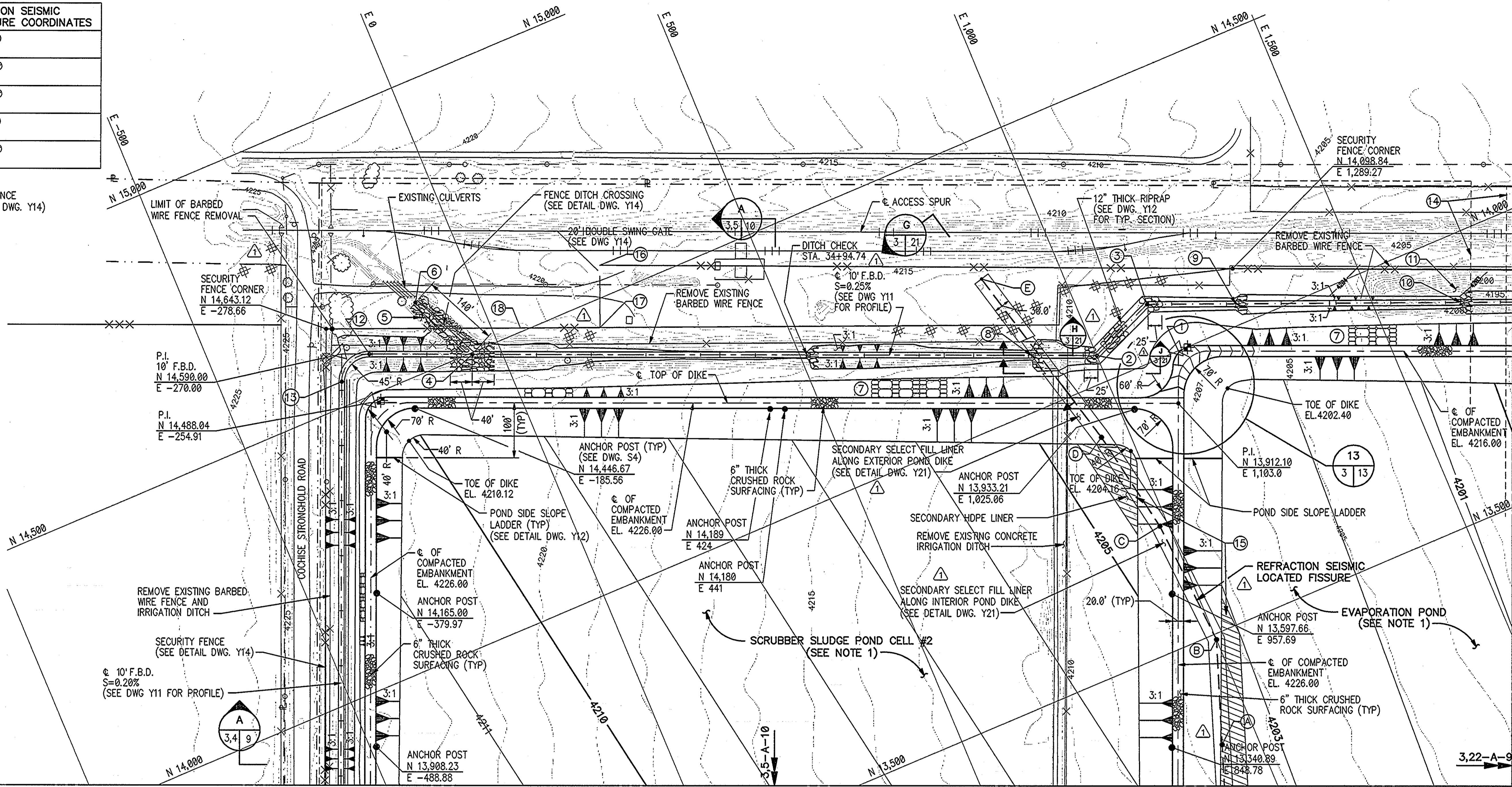
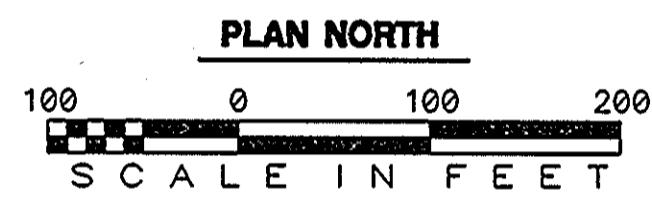
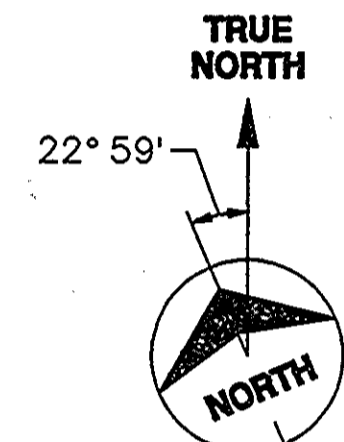


KEY NOTES

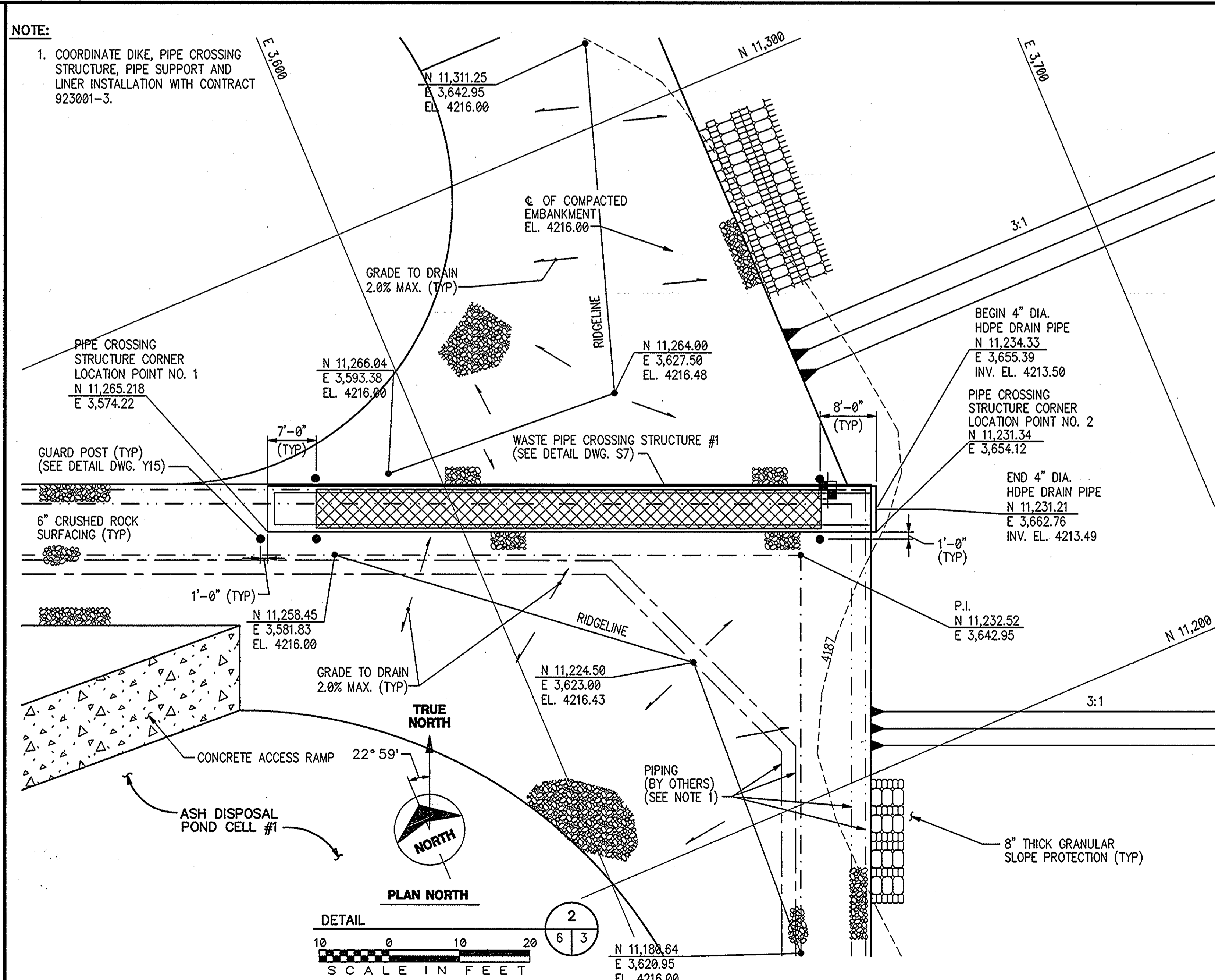
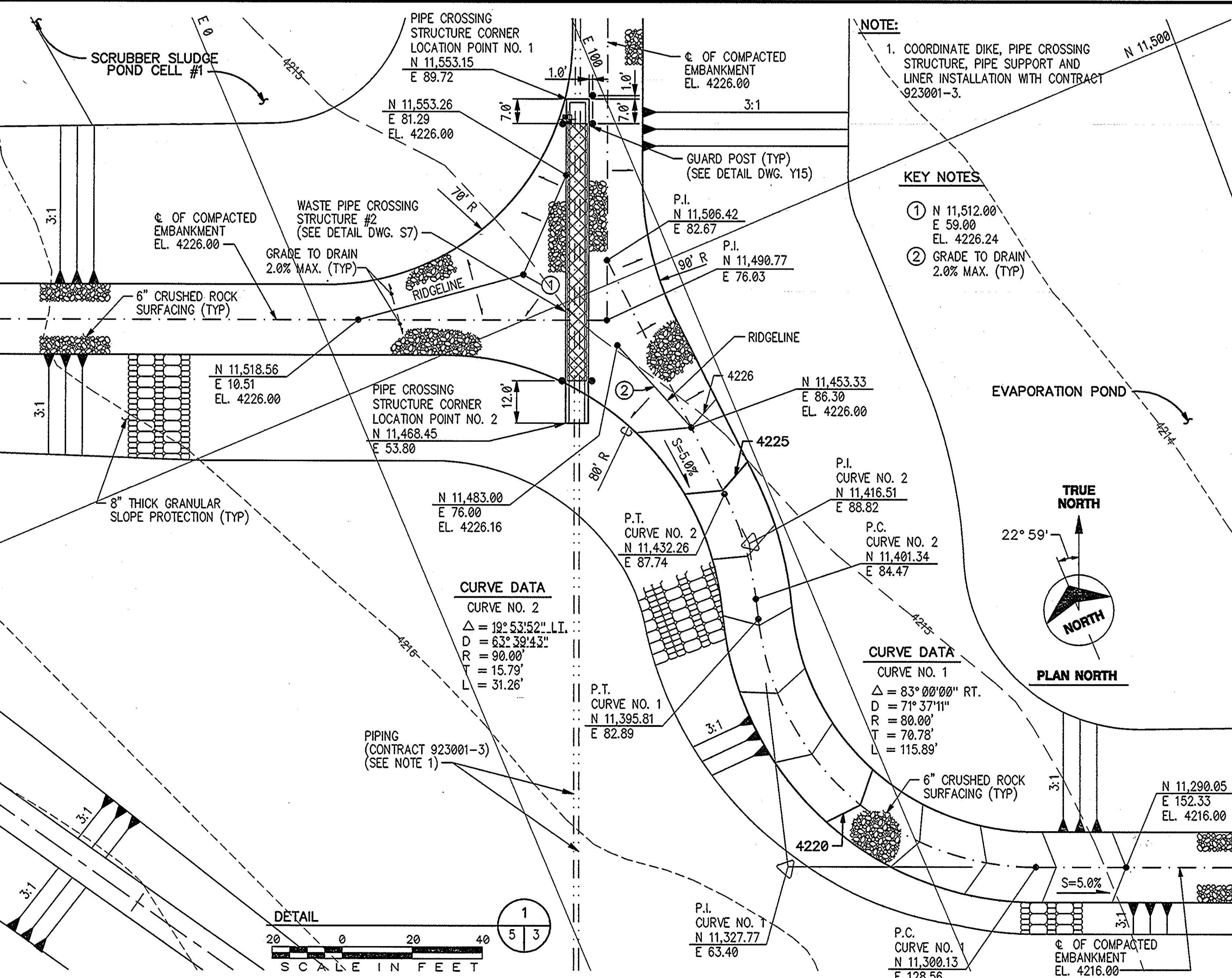
- ① P.I. N 13,999.56
E 1,140.09
- ② P.I. 10' F.B.D. STA. 40+24.71
N 14,050.00
E 1,000.00
E.L. 4205.32
- ③ P.I. 10' F.B.D. STA. 41+54.72
N 14,100.00
E 1,120.00
E.L. 4205.0
- ④ DITCH INTERSECTION STA. 28+82.65
N 14,496.88
E 1,51.00
E.L. 4214.13
- ⑤ 12" THICK RIPRAP (SEE DWG. Y12 FOR TYP SECTION)
- ⑥ BEGIN RESHAPING OF EXISTING DITCH TO 10' F.B.D. N 14,623.80
E -110.09
E.L. 4218.0
S=2.72%
- ⑦ 8" THICK GRANULAR SLOPE PROTECTION (TYP)
- ⑧ DITCH CHECK STA. 39+05.74
- ⑨ DITCH CHECK STA. 43+16.74
- ⑩ DITCH CHECK STA. 47+27.74
- ⑪ FILL IN EXISTING IRRIGATION POND W/COMPACTED MATERIAL
- ⑫ P.T. 10' F.B.D. STA. 26+94.74
BEGIN 0.25% SLOPE
E.L. 4214.60
- ⑬ P.C. 10' F.B.D. STA. 26+16.13
E.L. 4214.77
- ⑭ APPROXIMATE LOCATION OF EXISTING NATURAL GAS LINES (SEE NOTE 3)
- ⑮ TRANSITION BETWEEN SECONDARY HDPE LINER AND SELECT FILL LINER (TYP) (SEE DETAIL DWG. Y21)
- ⑯ SECURITY FENCE CORNER & GATE POST N 14,555.40
E 226.42
- ⑰ SECURITY FENCE CORNER N 14,450.87
E 182.90

| REFRACTION SEISMIC LOCATED FISSURE COORDINATES | |
|--|---------------------|
| (A) | N 13,310 E 935 |
| (B) | N 13,490 E 1,000 |
| (C) | N 13,720 E 985 |
| (D) | N 13,910 E 950 |
| (E) | N 14,260 E 860 |

- NOTES:
- ALL INTERIOR DIKE SIDE SLOPES SHALL BE LINED WITH AN 80 MIL HDPE LINER, AND THE POND BOTTOM SHALL BE LINED WITH A 60 MIL HDPE LINER. SECONDARY 60 MIL HDPE LINER SHALL BE INSTALLED WHERE INDICATED.
 - INSTALL LINER GAS VENTS AT 50' CENTERS AROUND PERIMETER OF POND. SEE DWG. Y12 FOR DETAILS.
 - CONTRACTOR SHALL CONTACT LOCAL GAS SERVICE TO LOCATE EXISTING NATURAL GAS LINES. CONTRACTOR SHALL UNDER DIRECTION OF THE LOCAL GAS SERVICE CAP AND STUB-UP EACH GAS LINE OUTSIDE LIMITS OF CONSTRUCTION, AND REMOVE THE GAS LINE WITHIN THE LIMITS OF CONSTRUCTION.



MATCHLINE SEE DWG. Y5



| no. | date | by | revision |
|-----|----------|-----|---|
| 0 | 3-10-94 | TLL | ISSUED TO OWNER FOR BID |
| 1 | 9-20-94 | TLL | ISSUED AS BID |
| 1 | 11-15-94 | DLM | REVISED SECONDARY LINER FOR EARTH FISSURE AND SURVEY MONUMENT LOCATIONS |
| | 11-18-94 | TLL | ISSUED PER C.O. #2 |
| | 1-27-95 | TLL | REVISION TO C.O. #2 |
| 2 | 4-8-96 | DLM | CONFORMING TO CONSTRUCTION RECORDS |

| no. | date | by | revision |
|-----|---------|-----|-----------------------------------|
| C | 1/24/97 | CRM | DCN 96/104, C. Reece / C. Walling |
| D | 2/20/98 | CRM | DCN 98/19, C. Reece / C. Walling |

Burns & McDonnell

date: JULY 29, 1992
designed: M. FRERKING
detailed: D. MADDOCK
checked: T. LARSON

**AEP CO
ARIZONA ELECTRIC
POWER COOPERATIVE, INC.
APACHE STATION**
COMBUSTION WASTE DISPOSAL FACILITY
WASTE DISPOSAL PONDS AND APPURTENANCES CONSTRUCTION

WASTE POND GRADING PLAN AREA 1

project: 91-033-1-010
contract: 923001-2
drawing: Y3
sheet: 5 of 2