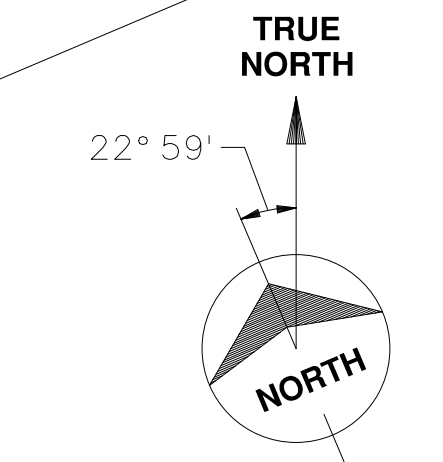


no.	date	by	revision
0	3-10-94	TLL	ISSUED TO OWNER FOR BID
1	4-8-96	DAM	ISSUED AS BID
1	4-8-96	DAM	CONFORMING TO CONSTRUCTION RECORDS
B	1/27/97	CRM	DCN 96/104, C. Reese / C. Wolling
C	1/19/12	JLC	DCN 11/01, C. CRECE

- NOTES:
1. ALL INTERIOR DIKE SIDE SLOPES SHALL BE LINED WITH AN 80 MIL HDPE LINER, AND THE ENTIRE POND BOTTOM SHALL BE LINED WITH A 60 MIL HDPE LINER.
  2. INSTALL LINER GAS VENTS AT 50' CENTERS AROUND PERIMETER OF POND. SEE DETAIL DWG. Y12.
  3. FOR BASE BID GRADING PLAN SEE DWGS. Y4 & Y6.
  4. PIEZOMETERS ADDED IN 2010. LOCATION APPROXIMATE



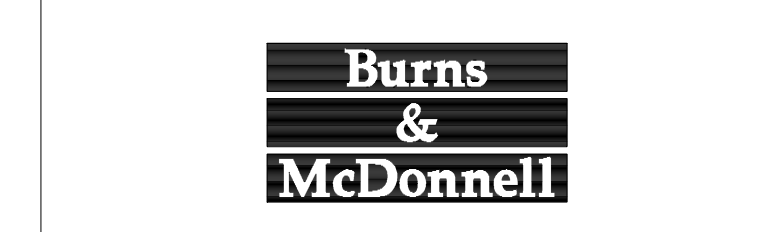
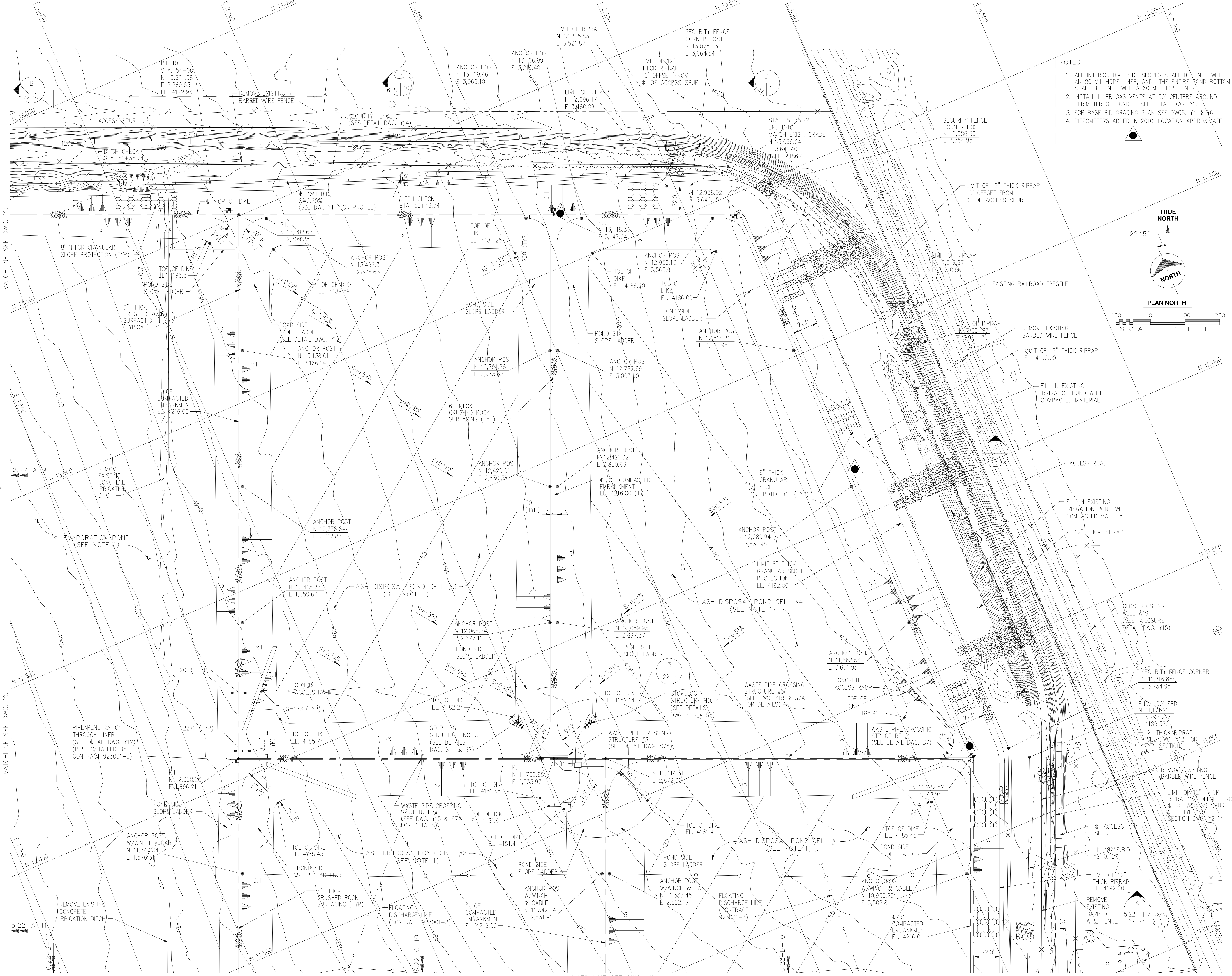
Millimeters

Scale for Micromining

Inches

Scale for Micromining

COPYRIGHT © 1994 BY BURNS & MCDONNELL ENGINEERING COMPANY, INC.



date	JAN. 19, 1993	detailed	D. MADDOCK
designed	M. FRERKING	checked	T. LARSON



COMBUSTION WASTE DISPOSAL FACILITY	
WASTE DISPOSAL PONDS AND APPURTENANCES CONSTRUCTION	
ASH DISPOSAL POND: CELLS 3 & 4	
project	91-033-1-010
contract	923001-2
drawing	Y22 - 1
sheet	of 1 sheets